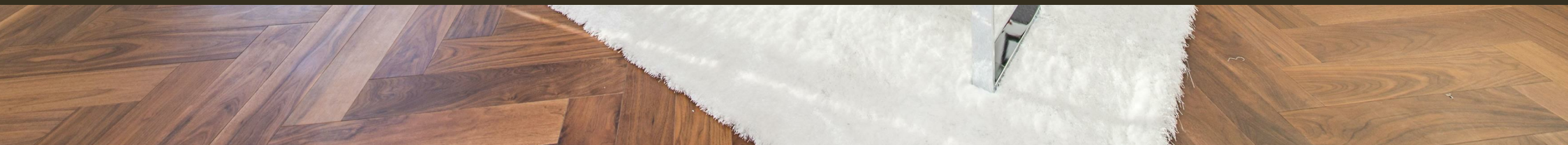




Embassy Gardens, Nine Elms
London SW11

GARTONJONES.COM



Embassy Gardens, Nine Elms London, SW11

£770 Per Week

A fantastic 1-bedroom apartment of 625sq.ft (58.1sqm) available to rent in Ambassador Building in Embassy Gardens, Nine Elms SW11, a highly popular residential development in the heart of the Nine Elms Regeneration. This apartment has an open plan reception room with a large balcony offering good views of the linear park. There is a smart integrated kitchen, good storage, and a luxury bathroom suite. For the residents' private use there is a 24-hour concierge, cinema screening room, library & lounge, business centre, yoga studio, 2 private gymnasiums, and a very cool indoor/outdoor swimming pool. Residents of Embassy Gardens also have access to the world-famous sky pool, connecting two of the towers at Legacy Building. Amenities such as District coffee shop, Darbys' restaurant, The Alchemist cocktail bar, as well as a Waitrose convenience store are located on-site but you are also close to a host of other local shops and restaurants on your doorstep. Nine Elms Tube Station is less than a 5 minutes' walk from Legacy Building providing easy access into Central London and the transport links of Vauxhall Station are also within walking distance.

Wandsworth Council Tax Band E - £1,117.29 per annum
12 Month Minimum Term
5 Week Security Deposit

- 1 Bedroom
- 625sq.ft (58.1sq.m)
- Open Plan Reception
- Modern Integrated Kitchen
- Balcony
- 24 Hour Concierge
- Sky Pool
- 2 Residents Gyms
- Cinema Screening Room
- 0.4 Miles from Battersea Power Station Tube Station

GARTON JONES.COM

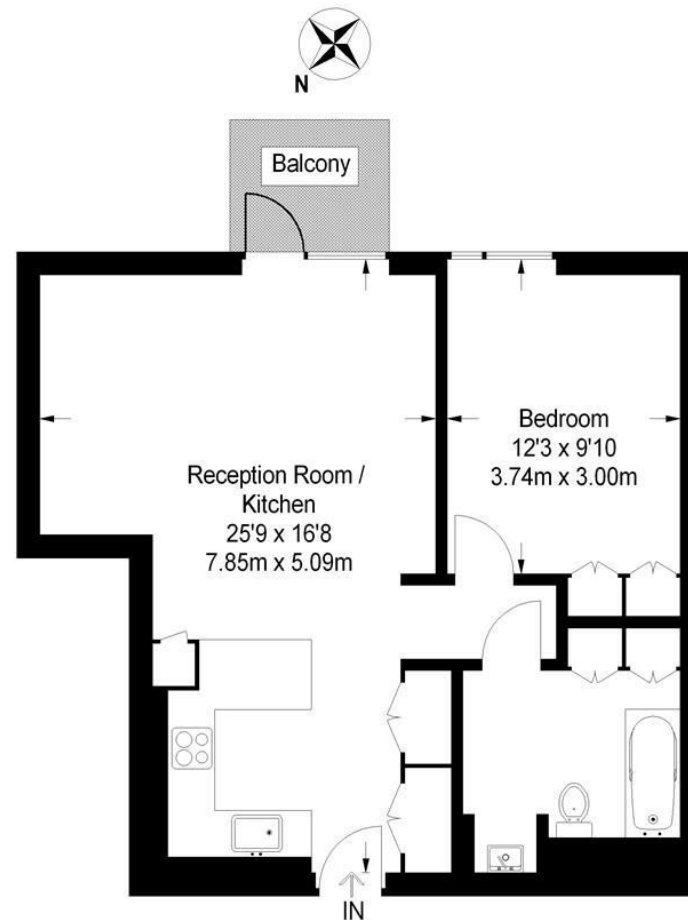
9 Albert
Embankment
London
SE1 7SP

Lettings:
+44 (0) 20 7735 1888
nineelms@gartonjones.com
www.gartonjones.com



Ambassador Building

Approximate Gross Internal Area
625 sq ft / 58.1 sq m



Not to scale, for guidance only and must not be relied upon as a statement of fact.
All measurements and areas are approximate only and have been prepared in
accordance with the current edition of the RICS Code of Measuring Practice.

